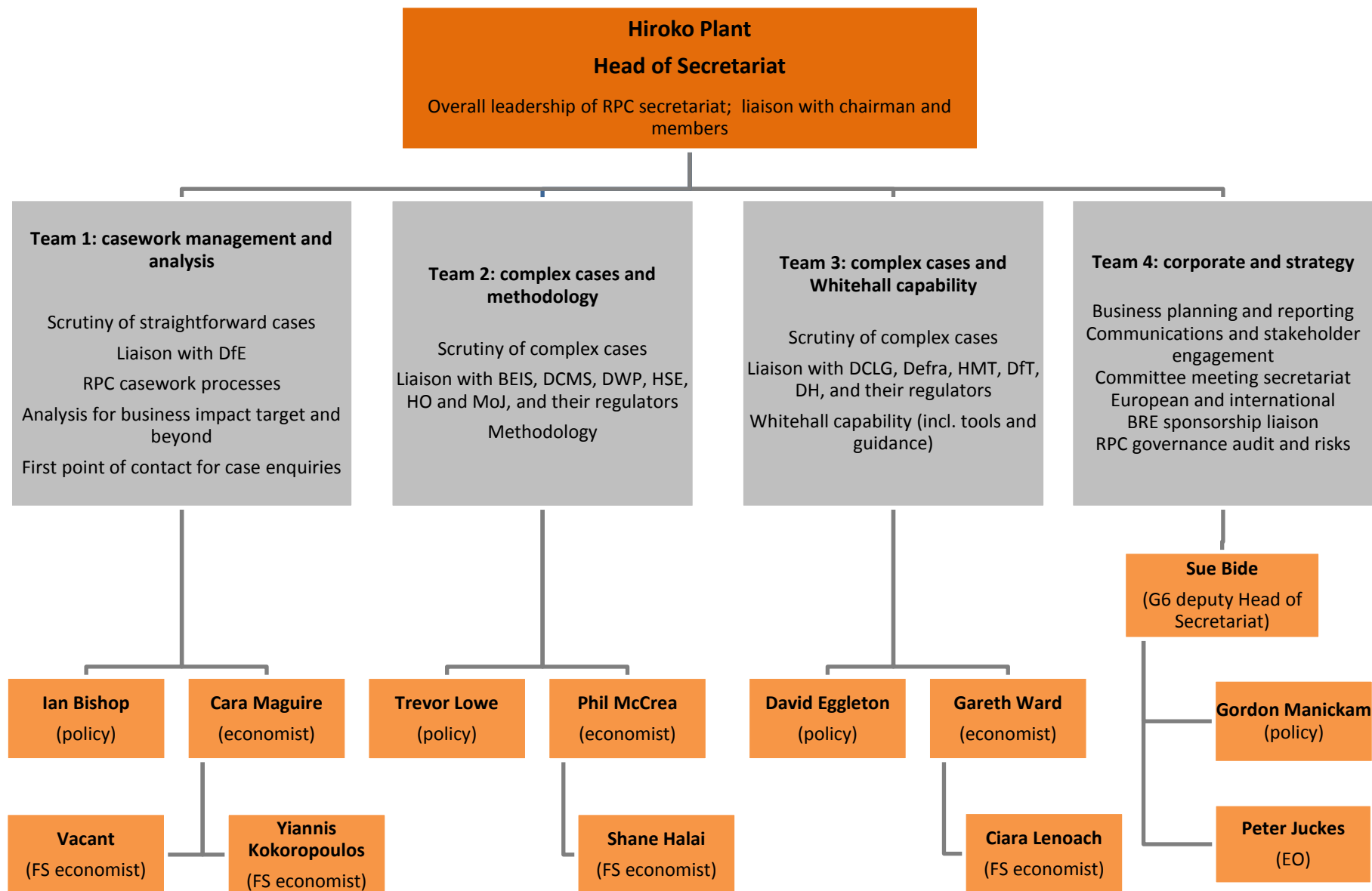


RPC secretariat – organisation chart



RPC secretariat – key contact points

First point of contact for case enquiries:

Ian Bishop
ian.bishop@rpc.gsi.gov.uk
020 7215 2145

Cara Maguire
cara.maguire@rpc.gsi.gov.uk
020 7215 2287

Lead departmental contacts:

For BEIS, DCMS, DWP, HSE, HO and MoJ, and their regulators:

Trevor Lowe
trevor.lowe@rpc.gsi.gov.uk
020 7215 2147

Phil McCrea
phil.crea@rpc.gsi.gov.uk
020 7215 6669

For DCLG, Defra, HMT, DfT, DH, and their regulators:

David Eggleton
david.eggleton@rpc.gsi.gov.uk
020 7215 5503

Gareth Ward
gareth.ward@rpc.gsi.gov.uk
020 7215 6433

For regulator specific guidance and methodology queries:

Cara Maguire
cara.maguire@rpc.gsi.gov.uk
020 7215 2287

Ian Bishop
ian.bishop@rpc.gsi.gov.uk
020 7215 2145

Gordon Manickam
Gordon.manickam@rpc.gsi.gov.uk
020 7215 0328

For general enquiries contact us at regulatoryenquiries@rpc.gsi.gov.uk. Alternatively, call 020 7215 1460.